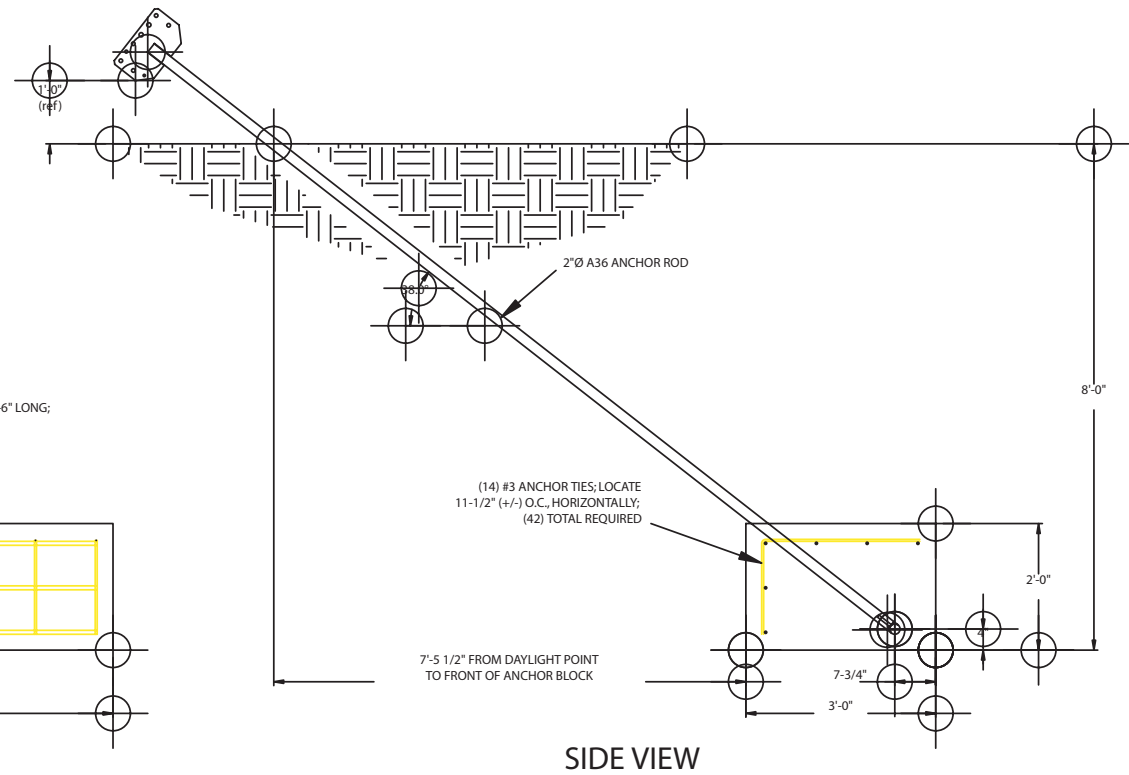
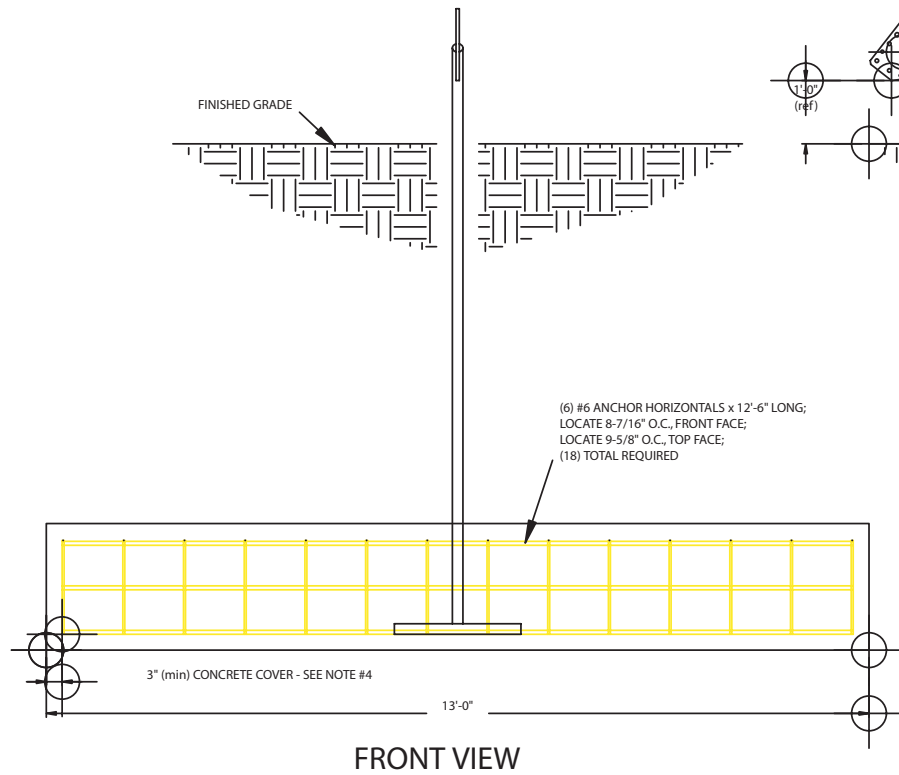


LET	REVISION	DATE	APP'D
-	INITIAL RELEASE	12/28/04	D.S.



NOTES:

- GUY ANCHOR DESIGN IS BASED UPON NORMAL SOIL CONDITION, AS OUTLINED BY TIA/EIA-222-F-1996. IT IS STRONGLY RECOMMENDED THAT SOILS TEST BE PERFORMED, ON A BY-SITE BASIS, TO DETERMINE ADEQUACY OF THE DESIGN FOR THE ACTUAL SOIL CONDITION.
- ALL CONCRETE SHALL HAVE A MINIMUM COMPRESSIVE STRENGTH OF 3,000psi AT 28 DAYS.
- ALL REINFORCING BAR (REBAR) SHALL BE DEFORMED AND CONFORM TO THE REQUIREMENTS OF ASTM-A615, USING GRADE 60 REBAR.
- ALL REBAR SHALL HAVE A 3", MINIMUM, CONCRETE COVER.
- GUY ANCHOR CONCRETE VOLUME = 2.9cu. yds., EACH; (3) REQUIRED

SWAGER COMMUNICATIONS INC. FREMONT, INDIANA 46737			
<small>THIS DRAWING IS THE PROPERTY OF SWAGER COMMUNICATIONS, INC. IT IS NOT TO BE REPRODUCED, COPIED, OR TRACED IN WHOLE, OR IN PART WITHOUT OUR WRITTEN CONSENT</small>			
STANDARD DRAWING	SCALE 1:24	DWN J.NEFF	APP'D D.SWAGER
TITLE BASELINE GUY ANCHOR DETAILS		MODEL: SWR36L-300G	
DATE 12/28/04	DRAWING NUMBER SWR36L-04-03		