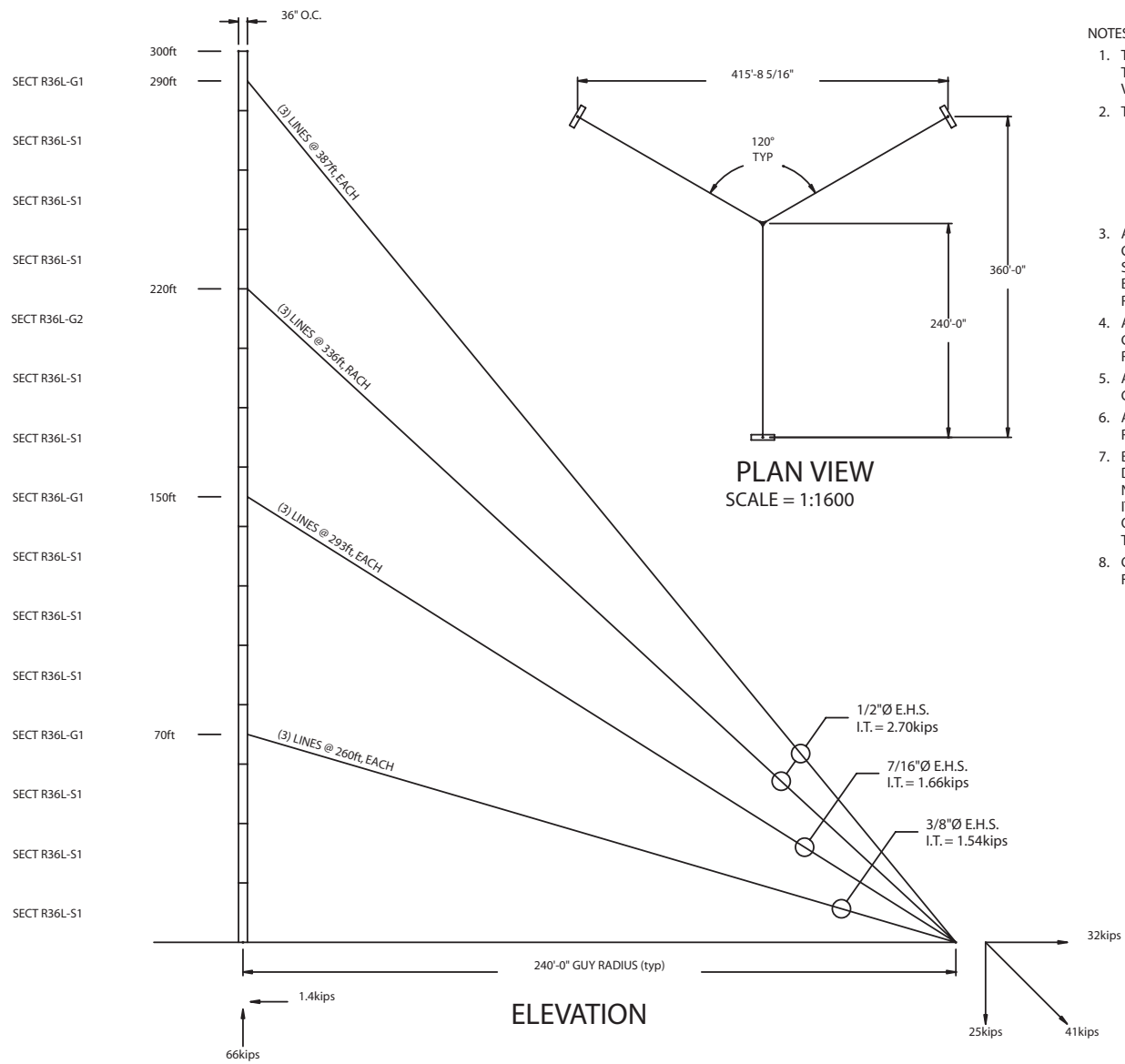


LEGS	A572 (50ksi)
	A36 (36ksi)
	A36 (36ksi)
HORIZONTALS	1-1/2"Ø SOLID ROUND
	1"Ø SOLID ROUND; Z-BRACED
DIAGONALS	3/4"Ø SOLID ROUND

LET	REVISION	DATE	APP'D
-	INITIAL RELEASE	12/28/04	D.S.



- NOTES:
- TOWER IS DESIGNED TO CONFORM TO THE REQUIREMENTS OF TIA/EIA-222-F-1996 WITH CONSIDERATIONS OF 80mph WIND VELOCITY AND 1/2" RADIAL ICE, CONCURRENTLY.
  - TOWER LOADING CRITERIA IS AS FOLLOWS:
    - 21sq.ft ANTENNA AREA AT THE 300ft ELEVATION, WITH (5) 7/8" FEEDLINES; FEEDLINES MAY BE DISTRIBUTED OVER TWO TOWER FACES
    - OSHA COMPLIANT CLIMBING LADDER W/CABLE-TYPE SAFETY-CLIMB SYSTEM
    - LIGHTNING PROTECTION/GROUNDING KIT
  - ALL STRUCTURAL STEEL SOLID ROUND LEG MATERIALS SHALL CONFORM TO THE REQUIREMENTS OF ASTM-A572 (50ksi YIELD STRENGTH MATERIAL); ALL ADDITIONAL STRUCTURAL STEEL PLATES, BARS, RODS, ANGLES, SHAPES, ETC., SHALL CONFORM TO THE REQUIREMENTS OF ASTM-A36 (36ksi YIELD STRENGTH MATERIAL).
  - ALL STRUCTURAL STEEL TOWER MEMBERS SHALL BE HOT-DIPPED GALVANIZED, AFTER FABRICATION, AND CONFORM TO THE REQUIREMENTS OF ASTM-A123.
  - ALL BOLTS AND BOLTED CONNECTIONS SHALL BE HOT-DIPPED GALVANIZED AND CONFORM TO THE REQUIREMENTS OF ASTM-A325.
  - ALL WELDED CONNECTIONS SHALL CONFORM TO THE LATEST REVISED CODE OF THE AMERICAN WELDING SOCIETY: AWS D1.1-96.
  - BASELINE FOUNDATION & GUY ANCHOR DESIGN, AS SHOWN ON DRAWINGS SWR36L-04-02 & SWR36L-04-03, ARE BASED UPON NORMAL SOIL CONDITION, AS OUTLINED BY TIA/EIA-222-F-1996. IT IS STRONGLY RECOMMENDED THAT SOIL TESTS BE PERFORMED ON A BY-SITE BASIS, TO DETERMINE ADEQUACY OF DESIGN FOR THE ACTUAL SITE SOIL CONDITION.
  - CUSTOM DESIGNS ARE AVAILABLE. PLEASE CONTACT THIS OFFICE FOR FURTHER DETAILS.

<b>SWAGER COMMUNICATIONS INC.</b> FREMONT, INDIANA 46737			
<small>THIS DRAWING IS THE PROPERTY OF SWAGER COMMUNICATIONS, INC. IT IS NOT TO BE REPRODUCED, COPIED, OR TRACED IN WHOLE, OR IN PART WITHOUT OUR WRITTEN CONSENT</small>			
STANDARD DRAWING	SCALE 1:480	DWN J.NEFF	APP'D D.SWAGER
TITLE <b>MODEL: SWR36L-300G</b> <b>300ft TOWER ELEVATION</b>			
DATE 12/28/04	DRAWING NUMBER <b>SWR36L-04-01</b>		