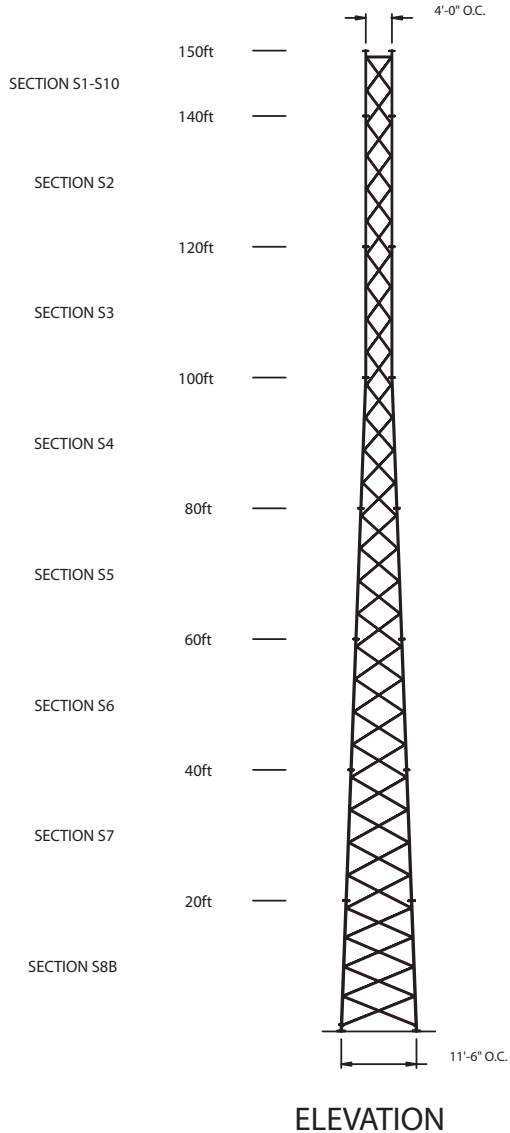
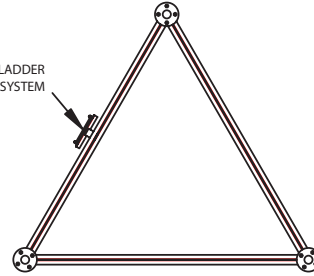


LEGS	3"Ø SOLID	2-3/4"Ø SOLID	2-1/2"Ø SOLID	2-1/4"Ø SOLID	1-3/4"Ø SOLID	A572 (50ksi)
DIAGONALS	2" x 2" x 1/8" L	2-3/4" x 1-3/4" x 1/8" L	1-3/4" x 1-3/4" x 1/8" L			A36 (36ksi)
HORIZONTALS		NONE				A36 (36ksi)
BRACE BOLTS	(1) 5/8"Ø/CONNECTION	(6) 1"Ø BOLTS PER LEG	(1) 1/2"Ø BOLT PER CONNECTION			ASTM-A325
LEG-SPLICE BOLTS	(6) 1"Ø BOLTS PER LEG	(6) 3/4"Ø BOLTS PER LEG	(4) 5/8"Ø BOLTS PER LEG			ASTM-A325

A = 1-3/4" x 1-3/4" x 1/8" L; AT TOP, ONLY



BASE REACTIONS:
TOTAL SHEAR = 20kips
AXIAL LOAD = 18kips
UPLIFT/LEG = 146kips
COMPRESSION/LEG = 158kips
OVERTURN MOMENT = 1516ft-kips



LET	REVISION	DATE	APP'D
-	INITIAL RELEASE	12/28/04	D.S.

NOTES:

- TOWER IS DESIGNED TO CONFORM TO THE REQUIREMENTS OF EIA/TIA-222-F-1996, WITH CONSIDERATIONS OF 100mph WIND VELOCITY AND 1/2" RADIAL ICE, CONCURRENTLY. THE WIND SPEED OF 100mph IS ESCALATED TO 120mph AT THE TOP OF THE 150ft TOWER SO THAT THE ADVANCED WIND SPEED IS EQUAL TO 120mph.
- TOWER LOADING CRITERIA IS AS FOLLOWS:
 - 20sq. ft., 240lbs. ANTENNA AT THE 150ft TOWER ELEVATION, WITH (2) 7/8" FEEDLINES
 - OSHA COMPLIANT EXTERNAL CLIMBING LADDER WITH SAFETY-CLIMB SYSTEM
 - TOWER LIGHTNING PROTECTION/GROUNDING KIT
- ALL STRUCTURAL STEEL SOLID ROUND LEG MATERIALS SHALL CONFORM TO THE REQUIREMENTS OF ASTM-A572 (50ksi YIELD STRENGTH MATERIAL); ALL ADDITIONAL STRUCTURAL STEEL PLATES, BARS, RODS, ANGLES, SHAPES, ETC., SHALL CONFORM TO THE REQUIREMENTS OF ASTM-A36 (36ksi YIELD STRENGTH MATERIAL).
- ALL STRUCTURAL STEEL TOWER MEMBERS SHALL BE HOT-DIPPED GALVANIZED, AFTER FABRICATION, AND CONFORM TO THE REQUIREMENTS OF ASTM-A123.
- ALL BOLTS AND BOLTED CONNECTIONS SHALL BE HOT-DIPPED GALVANIZED AND CONFORM TO THE REQUIREMENTS OF ASTM-A325.
- ALL WELDED CONNECTIONS SHALL CONFORM TO THE LATEST REVISED CODE OF THE AMERICAN WELDING SOCIETY: A.W.S. D1.1-96.
- AS SITE & SOIL CONDITIONS MAY VARY, FOUNDATION DESIGN SHOULD BE DETERMINED ON A BY-SITE BASIS. IT IS STRONGLY RECOMMENDED THAT SOIL COMPOSITION TESTS BE PERFORMED PRIOR TO TOWER PURCHASE.

SWAGER COMMUNICATIONS INC. FREMONT, INDIANA 46737			
THIS DRAWING IS THE PROPERTY OF SWAGER COMMUNICATIONS, INC. IT IS NOT TO BE REPRODUCED, COPIED, OR TRACED IN WHOLE, OR IN PART WITHOUT OUR WRITTEN CONSENT			
STANDARD DRAWING	SCALE 1:240	DWN APP'D	J.NEFF D.SWAGER
TITLE MODEL: SA9XL-150SS 150ft TOWER ELEVATION			
DATE 12/28/04	DRAWING NUMBER SA9XL-150-01		