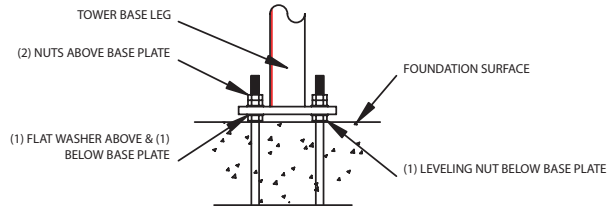
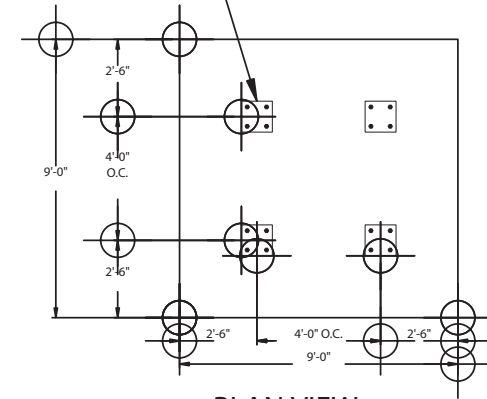


LET	REVISION	DATE	APP'D
-	INITIAL RELEASE	06/04/04	D.S.

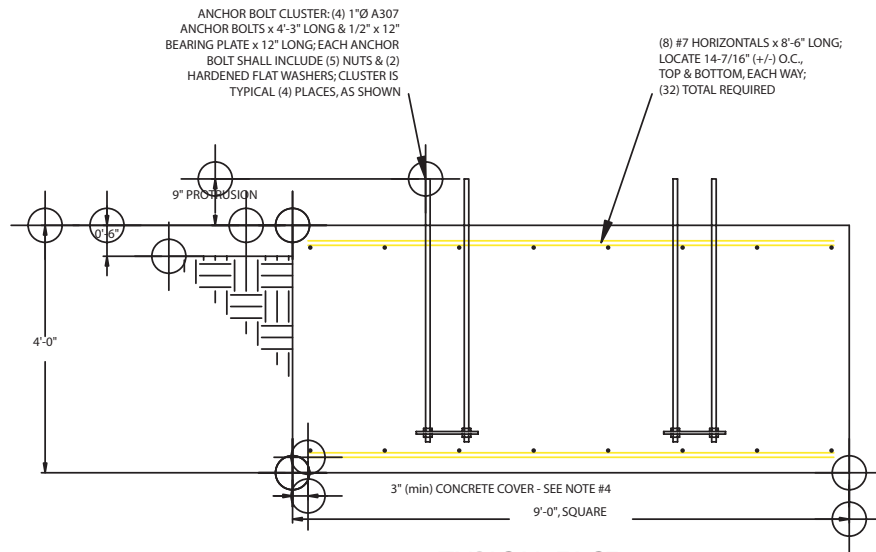


TYPICAL LEG INSTALLATION
 NOT TO SCALE

ANCHOR BOLT CLUSTER: (4) 1"Ø A307 ANCHOR BOLTS x 4'-3" LONG & 1/2" x 12" BEARING PLATE x 12" LONG; EACH ANCHOR BOLT SHALL INCLUDE (5) NUTS & (2) HARDENED FLAT WASHERS; CLUSTER IS TYPICAL (4) PLACES, AS SHOWN



PLAN VIEW
 SCALE = 1:48



TYPICAL FACE
 SCALE = 1:24

NOTES:

1. FOUNDATION DESIGN IS BASED UPON 3,000psf SOIL CONDITION, AS OUTLINED BY TIA/EIA-222-F-1996.
2. ALL CONCRETE SHALL HAVE A MINIMUM COMPRESSIVE STRENGTH OF 3,000psi AT 28 DAYS.
3. ALL REINFORCING BAR (REBAR) SHALL BE DEFORMED AND CONFORM TO THE REQUIREMENTS OF ASTM-A615, USING GRADE 60 REBAR.
4. ALL REBAR SHALL HAVE A 3", MINIMUM, CONCRETE COVER.
5. FOUNDATION CONCRETE VOLUME = 12.0cu. yds.
6. ESTIMATED NET REBAR WEIGHT = 556lbs.

SWAGER COMMUNICATIONS INC. ANGOLA, INDIANA 46703			
<small>THIS DRAWING IS THE PROPERTY OF SWAGER COMMUNICATIONS, INC. IT IS NOT TO BE REPRODUCED, COPIED, OR TRACED IN WHOLE, OR IN PART WITHOUT OUR WRITTEN CONSENT</small>			
STANDARD DRAWING	SCALE NOTED	DWN APP'D	J.NEFF D.SWAGER
TITLE FOUNDATION DETAILS; SLAB OPTION		MODEL: RTR/GP-20SS	
DATE 06/04/04	DRAWING NUMBER RTR-20-F1		