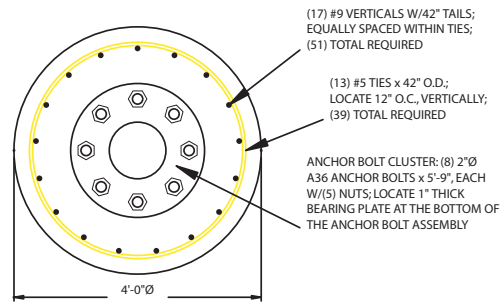
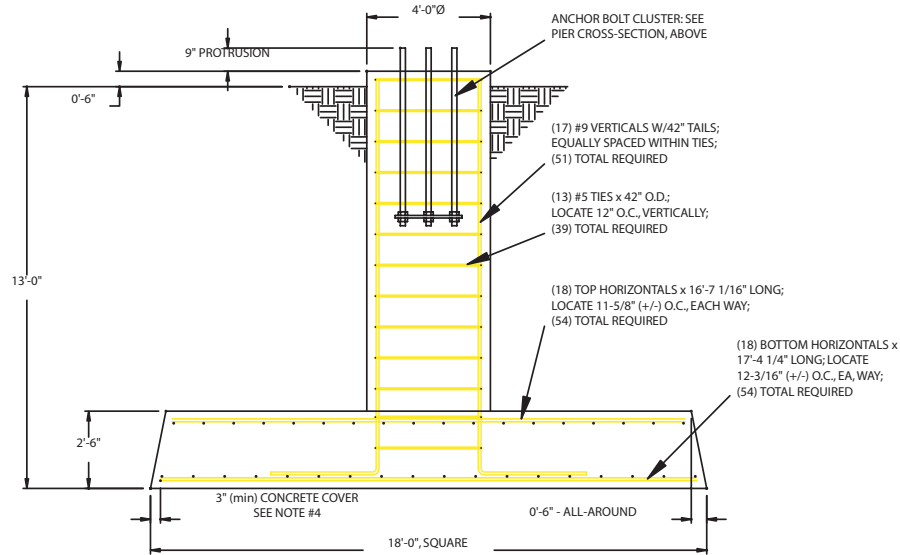


LET	REVISION	DATE	APP'D
-	INITIAL RELEASE	12/29/04	D.S.



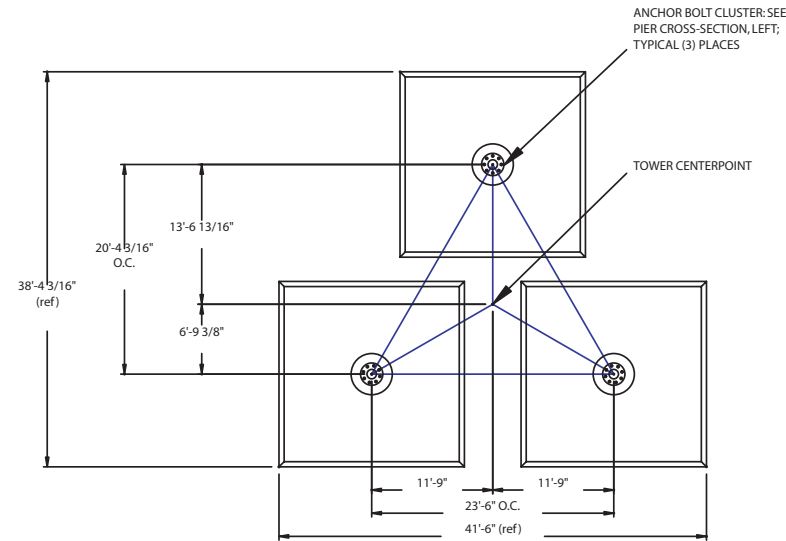
PIER CROSS-SECTION
SCALE = 1:24



TYPICAL FACE

NOTES:

1. FOUNDATION DESIGN IS BASED UPON NORMAL SOIL CONDITION, AS OUTLINED BY TIA/EIA-222-F-1996. IT IS STRONGLY RECOMMENDED THAT SOILS TESTS BE PERFORMED, ON A BY-SITE BASIS, TO DETERMINE ADEQUACY OF THE DESIGN FOR THE ACTUAL SOIL CONDITION.
2. ALL CONCRETE SHALL HAVE A MINIMUM COMPRESSIVE STRENGTH OF 3,000psi AT 28 DAYS.
3. ALL REINFORCING BAR (REBAR) SHALL BE DEFORMED AND CONFORM TO THE REQUIREMENTS OF ASTM-A615, USING GRADE 60 REBAR.
4. ALL REBAR SHALL HAVE A 3", MINIMUM, CONCRETE COVER.
5. FOUNDATION CONCRETE VOLUME = 35.2cu. yds., EACH; (3) ARE REQUIRED.



FOUNDATION LAYOUT
SCALE = 1:144

SWAGER COMMUNICATIONS INC. FREMONT, INDIANA 46737			
<small>THIS DRAWING IS THE PROPERTY OF SWAGER COMMUNICATIONS, INC. IT IS NOT TO BE REPRODUCED, COPIED, OR TRACED IN WHOLE OR IN PART WITHOUT OUR WRITTEN CONSENT</small>			
STANDARD DRAWING	SCALE 1:48	DWN APP'D	J.NEFF D.SWAGER
TITLE BASELINE FOUNDATION, OPTION #1		MODEL: PA9M-300SS	
DATE 12/29/04	DRAWING NUMBER PA9M-300-02 (1of2)		