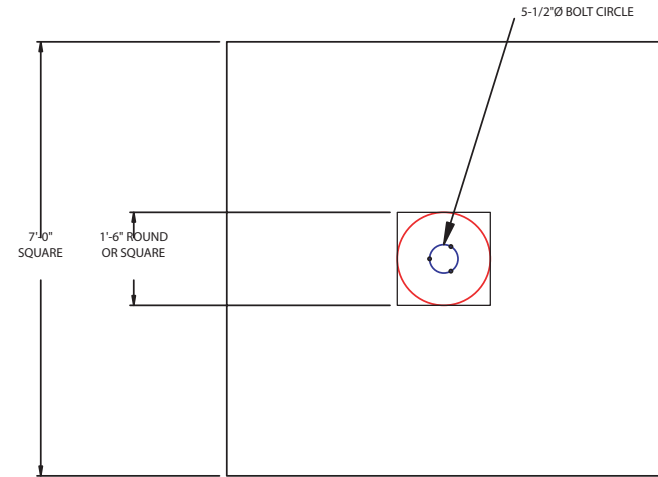


TYPICAL FACE

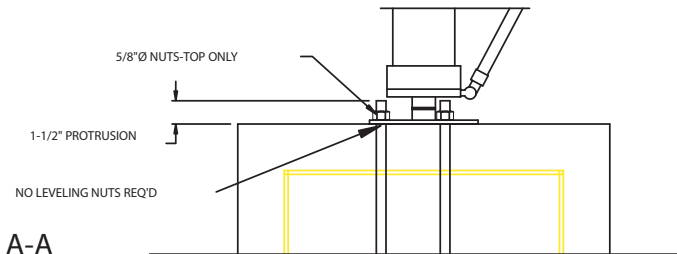
1. ALL CONCRETE SHALL HAVE A MINIMUM COMPRESSIVE STRENGTH OF 3,000psi AT 28 DAYS.
2. ALL REINFORCING BAR (REBAR) SHALL BE DEFORMED AND CONFORM TO THE REQUIREMENTS OF ASTM-A615, USING GRADE 60 REBAR.
3. ALL REBAR SHALL HAVE A 3", MINIMUM, CONCRETE COVER.
4. PIER CONCRETE VOLUME = 3.2cu. yds., SQ. OPTION; 3.1cu. yds., ROUND OPTION.
5. SWAGER COMMUNICATIONS MUST BE NOTIFIED IMMEDIATELY, PRIOR TO TOWER FABRICATION, SHOULD THERE BE ANY ELEVATION DIFFERENCE OR CHANGE IN THE RADIUS BETWEEN THE TOWER FOUNDATION LOCATION AND EACH OF THE GUY ANCHORS. THE USE OF Poured SOCKET FITTINGS ON THE PHILLYSTRAN CAN NOT ALLOW FOR FIELD ADJUSTMENTS, THEREFORE PHILLYSTRAN LENGTHS MUST BE FABRICATED TO EXACT LENGTHS PRIOR TO TOWER SHIPMENT.

NOTES:

A  
A



PLAN VIEW  
SCALE = 1:24



SECTION A-A  
SCALE = 1:8

LET	REVISION	DATE	APP'D
-	INITIAL RELEASE	06/07/04	D.S.

<b>SWAGER COMMUNICATIONS INC.</b> ANGOLA, INDIANA 46703			
<small>THIS DRAWING IS THE PROPERTY OF SWAGER COMMUNICATIONS, INC. IT IS NOT TO BE REPRODUCED, COPIED OR TRACED IN WHOLE OR IN PART WITHOUT OUR WRITTEN CONSENT</small>			
STANDARD DRAWING	SCALE 1:16	DWN J.NEFF	APP'D D.SWAGER
TITLE MODEL: SB42-60NDB <b>FOUNDATION PIER DETAILS</b>			
DATE 06/07/04	DRAWING NUMBER NDB60-04-02		