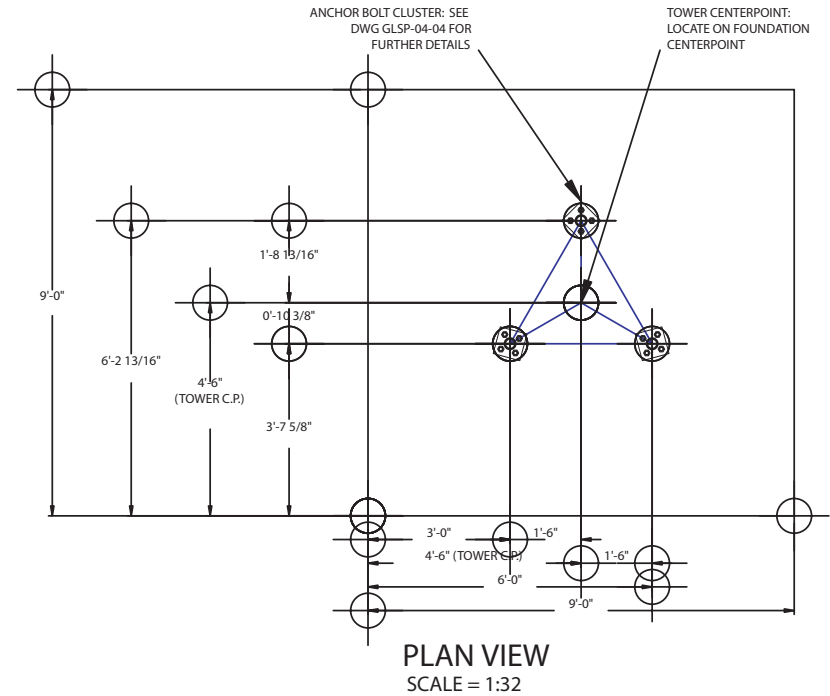
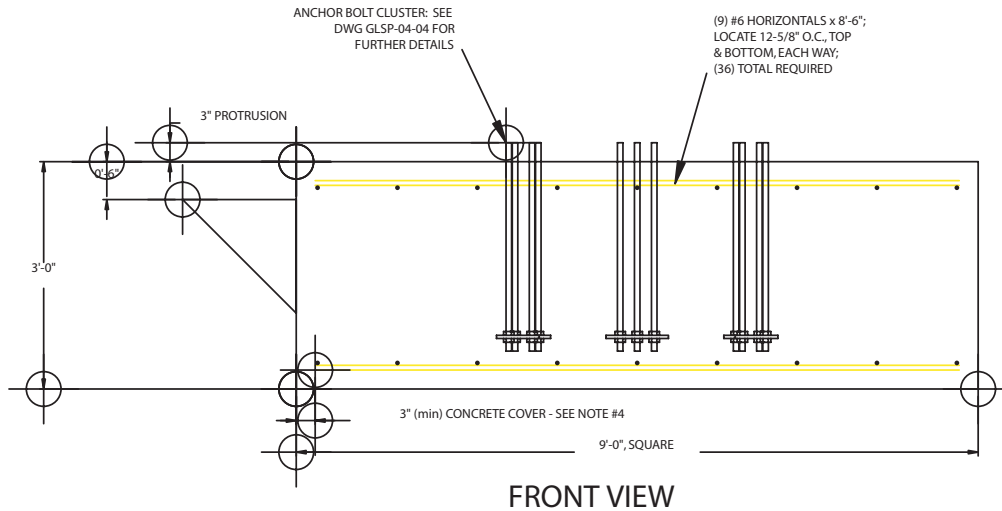


LET	REVISION	DATE	APP'D
-	INITIAL RELEASE	10/08/04	D.S.



NOTES:

- FOUNDATION IS DESIGNED AT 100mph FASTEST-MILE WIND SPEED PER TIA/EIA-222-F-1996 STANDARD, -OR- 120mph 3-SECOND GUST WIND SPEED PER IBC 2003 AND INDIANA BUILDING CODE, AND 1/2" RADIAL ICE WITH ALLOWABLE WIND LOAD REDUCTION. FOUNDATION DESIGN IS, ALSO, BASED UPON 3,000psf SOIL CONDITION, & 50ft TOWER HEIGHT.
- ALL CONCRETE SHALL HAVE A MINIMUM COMPRESSIVE STRENGTH OF 3,000psi AT 28 DAYS.
- ALL REINFORCING BAR (REBAR) SHALL BE DEFORMED AND CONFORM TO THE REQUIREMENTS OF ASTM-A615, USING GRADE 60 REBAR.
- ALL REBAR SHALL HAVE A 3", MINIMUM, CONCRETE COVER.
- FOUNDATION CONCRETE VOLUME = 9.0cu.yds.

SWAGER COMMUNICATIONS INC. ANGOLA, INDIANA 46703			
<small>THIS DRAWING IS THE PROPERTY OF SWAGER COMMUNICATIONS, INC. IT IS NOT TO BE REPRODUCED, COPIED, OR TRACED IN WHOLE, OR IN PART WITHOUT OUR WRITTEN CONSENT</small>			
STANDARD DRAWING	SCALE 1:20	DWN J.NEFF	APP'D D.SWAGER
TITLE MODEL: PWR36-50G5 BASELINE FOUNDATION DETAILS			
DATE 10/08/04	DRAWING NUMBER GLSP-04-03		