

LEGS	2-1/2" Sch 40 PIPE	A500, Gr.B (50ksi)
HORIZONTALS	3/4"Ø SOLID ROUND	A36 (36ksi)
DIAGONALS	1-1/8"Ø SOLID ROUND; Z-BRACED	A36 (36ksi)

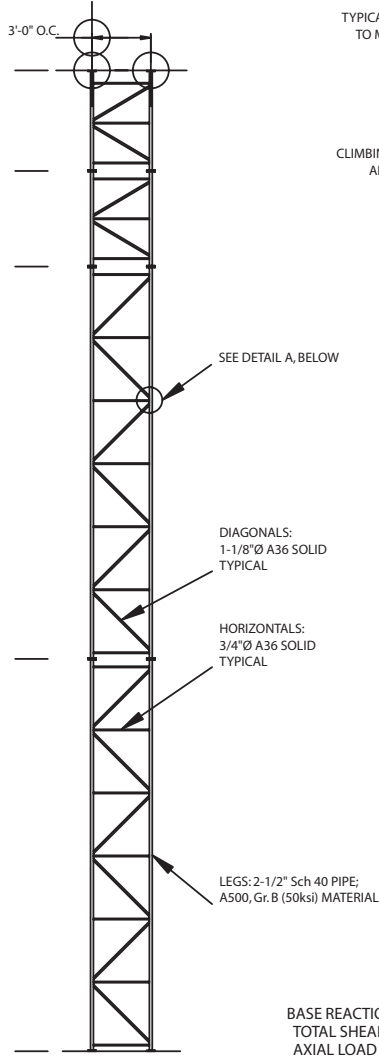
50ft (nom)  
(48'-9" ACTUAL)  
SECTION S5  
(4'-10 1/2" ACTUAL)  
45ft (nom)  
(43'-10 1/2" ACTUAL)  
SECTION S5  
(4'-10 1/2" ACTUAL)  
40ft (nom)  
(39'-0" ACTUAL)

SECTION S20  
(19'-6" ACTUAL)

20ft (nom)  
(19'-6" ACTUAL)

SECTION S20  
(19'-6" ACTUAL)

ELEVATION



BASE REACTIONS:  
TOTAL SHEAR = 3.6kips  
AXIAL LOAD = 3.2kips  
UPLIFT/LEG = 34.3kips  
COMP/LEG = 36.4kips  
O.T. MOMENT = 92ft-kips  
@ 56mph & NO ICE, MAX DEFLECTION = 1.02° < 2.5°  
@ 45mph & 1/2" ICE, MAX DEFLECTION = 0.86° < 2.5°

FLANGE BOLTS: USE (12)  
7/8"Ø BOLTS x 3" LONG  
TYPICAL EACH SECTION; LAYOUT  
TO MATCH CUSTOMER'S DWG.  
No. 950849

CLIMBING LADDER W/ CLIMBER'S BUDDY  
ALUMINUM SAFETY-CLIMB SYSTEM

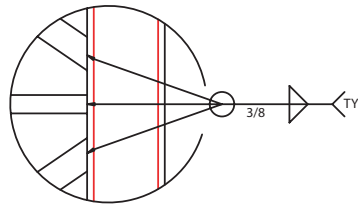
SEE DETAIL A, BELOW

DIAGONALS:  
1-1/8"Ø A36 SOLID  
TYPICAL

HORIZONTALS:  
3/4"Ø A36 SOLID  
TYPICAL

LEGS: 2-1/2" Sch 40 PIPE;  
A500, Gr. B (50ksi) MATERIAL

PLAN VIEW  
SCALE = 1:20



DETAIL A  
NOT TO SCALE

LET	REVISION	DATE	APP'D
-	INITIAL RELEASE	10/08/04	D.S.

NOTES:

- TOWER IS DESIGNED TO CONFORM TO THE REQUIREMENTS OF TIA/EIA-222-F-1996, WITH CONSIDERATIONS OF 100mph FASTEST-MILE WIND SPEED -OR- 120mph 3-SECOND GUST WIND SPEED PER IBC 2003 AND INDIANA BUILDING CODE, AND 1/2" RADIAL ICE WITH ALLOWABLE WIND LOAD REDUCTION.
- TOWER LOADING IS AS FOLLOWS:
  - (1) 656sq. in. GRID ANTENNA AT 43ft W/ 1/2" FEEDLINE
  - RELOCATABLE INTERNAL WORK PLATFORM AT 40ft; SEE NOTE #10.
  - (1) 656sq. in. GRID ANTENNA AT 29ft W/ 1/2" FEEDLINE
  - RELOCATABLE INTERNAL WORK PLATFORM AT 25ft; SEE NOTE #10.
  - (1) 656sq. in. GRID ANTENNA AT 15ft W/ 1/2" FEEDLINE
  - RELOCATABLE INTERNAL WORK PLATFORM AT 12ft; SEE NOTE #10.
  - EXTERNAL CLIMBING LADDER (OSHA COMPLIANT) WITH A CLIMBER'S BUDDY RIGID ALUMINUM RAIL SAFETY-CLIMB SYSTEM.
- ALL STRUCTURAL STEEL PIPE LEG MEMBERS SHALL CONFORM TO THE REQUIREMENTS OF ASTM-A500, Gr. B (50ksi YIELD STRENGTH MATERIAL); ALL ADDITIONAL STRUCTURAL STEEL PLATES, BARS, RODS, ANGLES, SHAPES, ETC., SHALL CONFORM TO THE REQUIREMENTS OF ASTM-A36 (36ksi YIELD STRENGTH MATERIAL).
- ALL STRUCTURAL STEEL MEMBERS SHALL BE HOT-DIPPED GALVANIZED, AFTER FABRICATION, AND CONFORM TO THE REQUIREMENTS OF ASTM-A123.
- ALL BOLTS AND BOLTED CONNECTIONS SHALL BE HOT-DIPPED GALVANIZED AND CONFORM TO THE REQUIREMENTS OF ASTM-A325.
- ALL WELDED CONNECTIONS SHALL CONFORM TO THE LATEST REVISED CODE OF THE AMERICAN WELDING SOCIETY: A.W.S. D1.1-96.
- FACTORY PAINT SHALL CONFORM TO THE LATEST REQUIREMENTS OF THE F.A.A. & SPECIFICATIONS.
- TOWER ANCHOR BOLT FOOTPRINT SHALL EQUAL THE EXISTING FOUNDATIONS, AS OUTLINED ON CUSTOMER-SUPPLIED DRAWING #950849.
- TOWER SECTIONS ARE AVAILABLE IN 20ft (SECTION S20), 10ft (SECTION S10), AND 5ft (SECTION S5) INCREMENTS.
- A RELOCATABLE, INTERNAL WORK PLATFORM IS AVAILABLE AS AN OPTION, AND SHOWN FOR DESIGN PURPOSES, ONLY.

SWAGER COMMUNICATIONS INC. ANGOLA, INDIANA 46703			
THIS DRAWING IS THE PROPERTY OF SWAGER COMMUNICATIONS, INC. IT IS NOT TO BE REPRODUCED, COPIED, OR TRACED IN WHOLE, OR IN PART WITHOUT OUR WRITTEN CONSENT			
STANDARD DRAWING	SCALE 1:80	DWN APP'D	J.NEFF D.SWAGER
TITLE MODEL: PWR36-50GS 50ft GLIDE SLOPE TOWER ELEVATION			
DATE 10/08/04	DRAWING NUMBER GLSP-04-01		