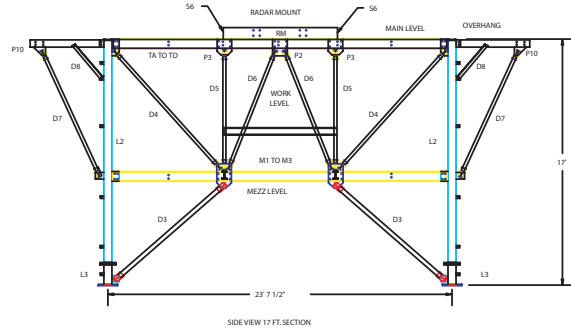
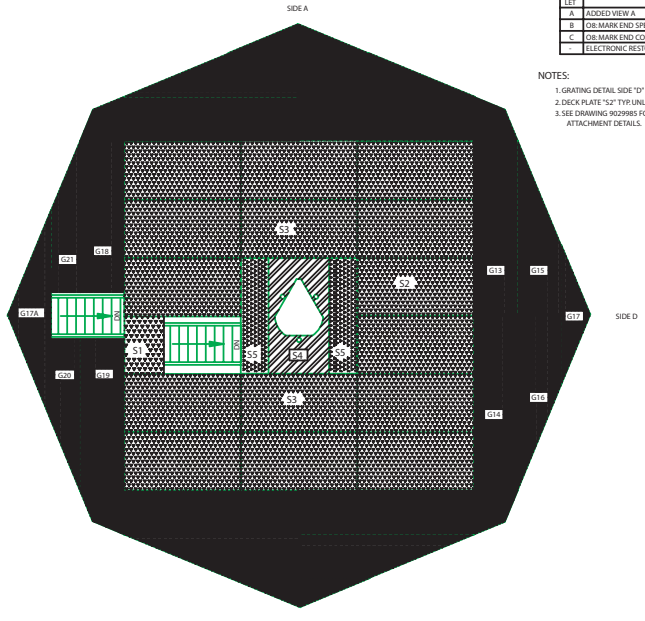
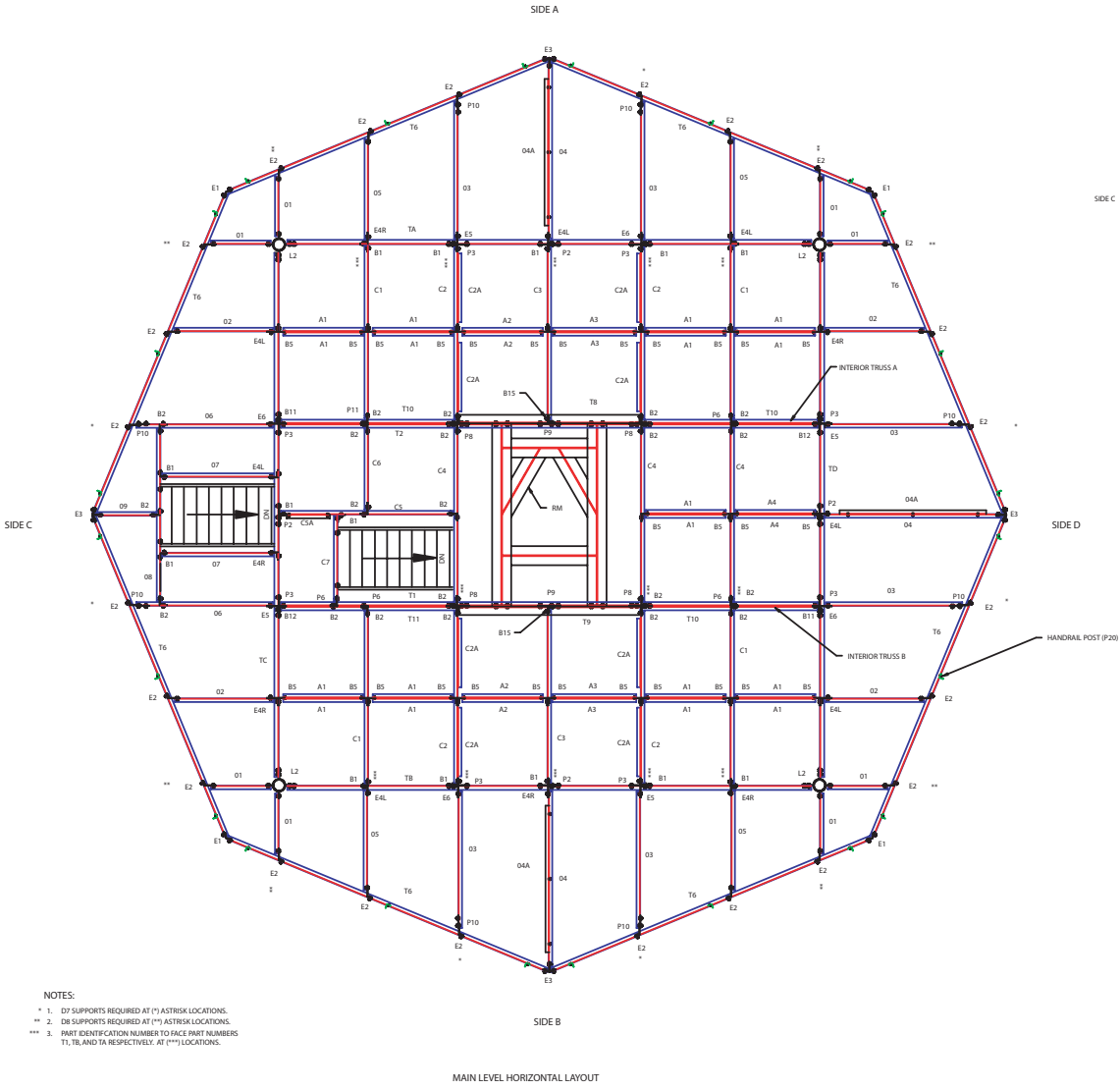


LET	REVISION	DATE	APP'D
A	ADDED VIEW A	04/30/92	D.S.
B	OB-MARK END SPECIFIED	03/03/93	D.S.
C	OB-MARK END CORRECTED	04/16/92	T.S.
	ELECTRONIC RESTORATION	05/02/02	T.S.

NOTES:
 1. GRATING DETAIL SIDE "D" (TYP FOR A & B).
 2. DECK PLATE "5/8" TYP UNLESS OTHERWISE NOTED.
 3. SEE DRAWING 9029985 FOR PLATE AND GRATING ATTACHMENT DETAILS.



NOTES:
 1. D7 SUPPORTS REQUIRED AT (*) ASTRIK LOCATIONS.
 2. D8 SUPPORTS REQUIRED AT (**) ASTRIK LOCATIONS.
 3. PART IDENTIFICATION NUMBER TO FACE PART NUMBERS T1, T8, AND TA RESPECTIVELY. AT (****) LOCATIONS.

DR	R. VAN ALKEN	SWAGER COMMUNICATIONS INC.
CHK	D. SWIGER	ANGELA REDMAN 4020
APP	W. HOLCOMB PE	
TOWER AB-1368/F 17 FT. SECTION ERECTION DRAWING MAIN LEVEL		
DES	CODE EXIST NO.	DRAWING NO.
D	98752	9029984
SCALE	NTS	SHEET 1 OF 1