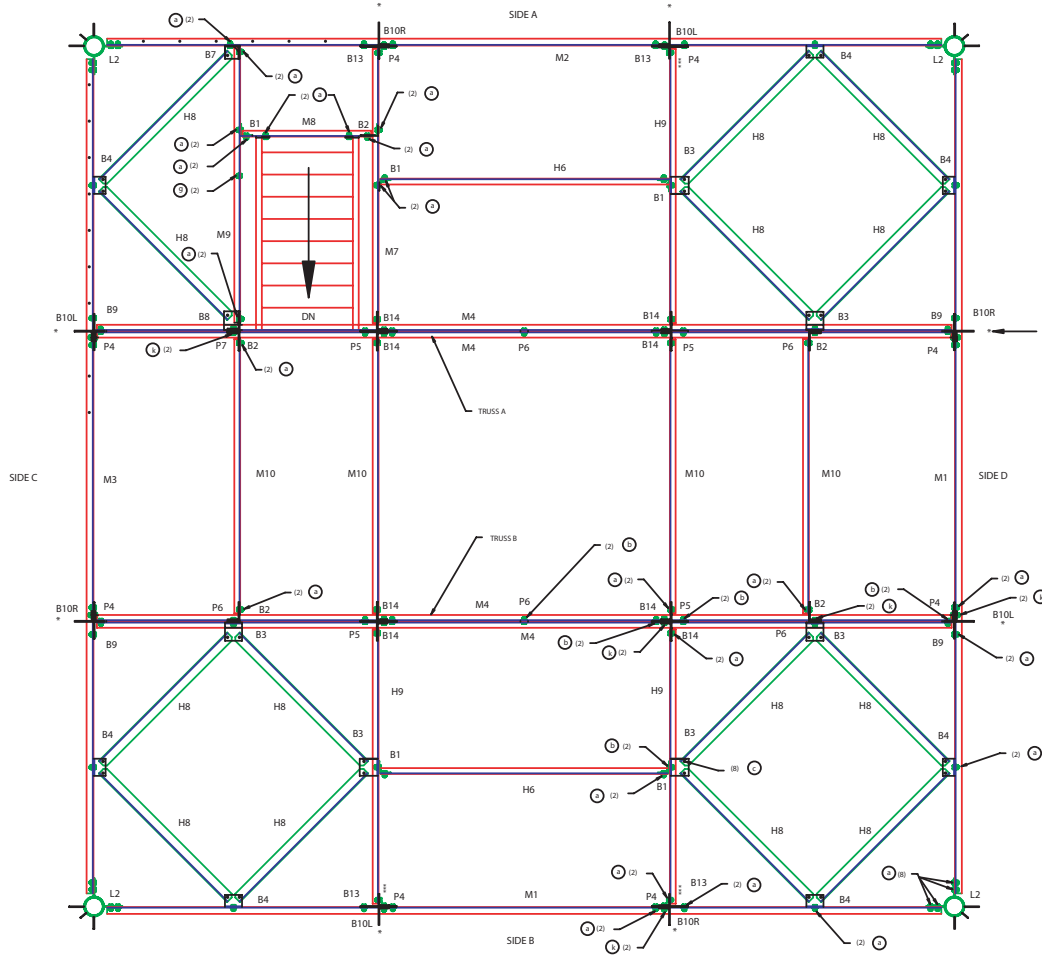
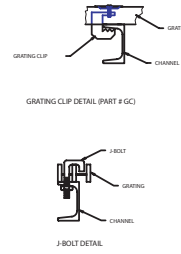


LET	REVISION	DATE	APP'D
A	BRACKETS MK 83 WERE BSA'S	08/31/04	L.S.

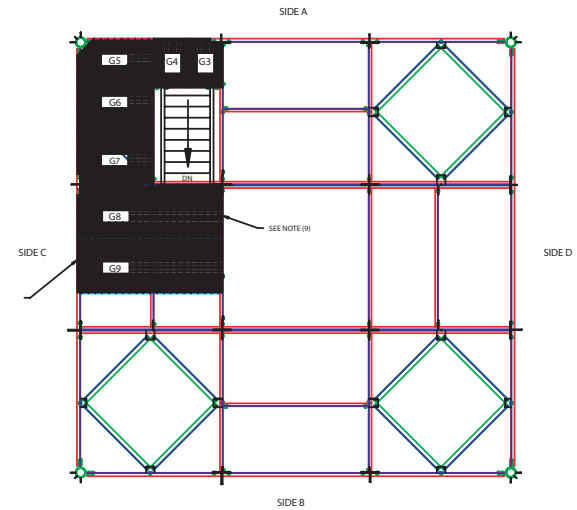


MEZZ. HORIZONTAL LAYOUT

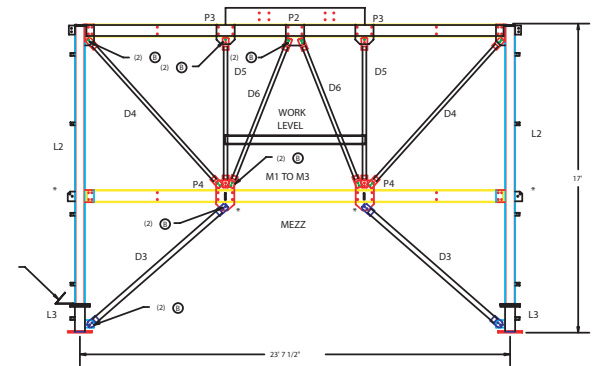


FOR LOCATION OF GRATING CLIPS SEE NOTE 7.

SEE NOTE 1.



STAIR AND GRATING LAYOUT



SIDE VIEW 17 FT. SECTION

NOTES:

- \* 1. D7 SUPPORTS REQUIRED AT (\*) ASTERISK LOCATIONS.
2. SIDE ORIENTATION MUST MATCH LANDING ON TOP 10 FT. SECTION.
3. REFER TO PARTS LIST FOR BOLT SIZES.
4. ALL BOLT SIZES ARE TYPICAL FOR SECTION.
5. FLANGE (FLG) PLATE BOLTS A-490 7/8" X 3 3/4" W/HARDEN FLAT WASHERS.
6. PART IDENTIFICATION NUMBERS TO FACE PART NUMBERS M1 AND M2 RESPECTIVELY AT (\*\*) ASTERISK LOCATIONS.
7. FOR CONNECTIONS ON OUTER MEMBERS, SIDES A AND C USE (1) BOLTS WHERE APPLICABLE. FOR CONNECTIONS ON INTERIOR MEMBERS, USE GRATING CLIPS (1) ONE EACH CORNER & MID POINTS WHERE APPLICABLE, ON EACH SECTION OF GRATING.
8. NP (NAMEPLATE W/BRACKET) TO BE MOUNTED ON L3 (LEG) USING EXISTING BOLTS.
9. SEE DRAWING 9029988 FOR WORK LEVEL STAIRWAY.

DESIGNED BY D. VAN ALKEN	SWAGER COMMUNICATIONS INC. INGOLA, INDIANA 46039	
CHECKED BY D. SWIGER	TITLE TOWER AB-1368/F 17 FT. SECTION ERECTION DRAWING MEZZANINE LEVEL	
DRAWN BY W. HOLCOMB PE.	DATE D 98752	DRAWING NO. 9029983
SCALE NTS	SHEET 1 OF 1	