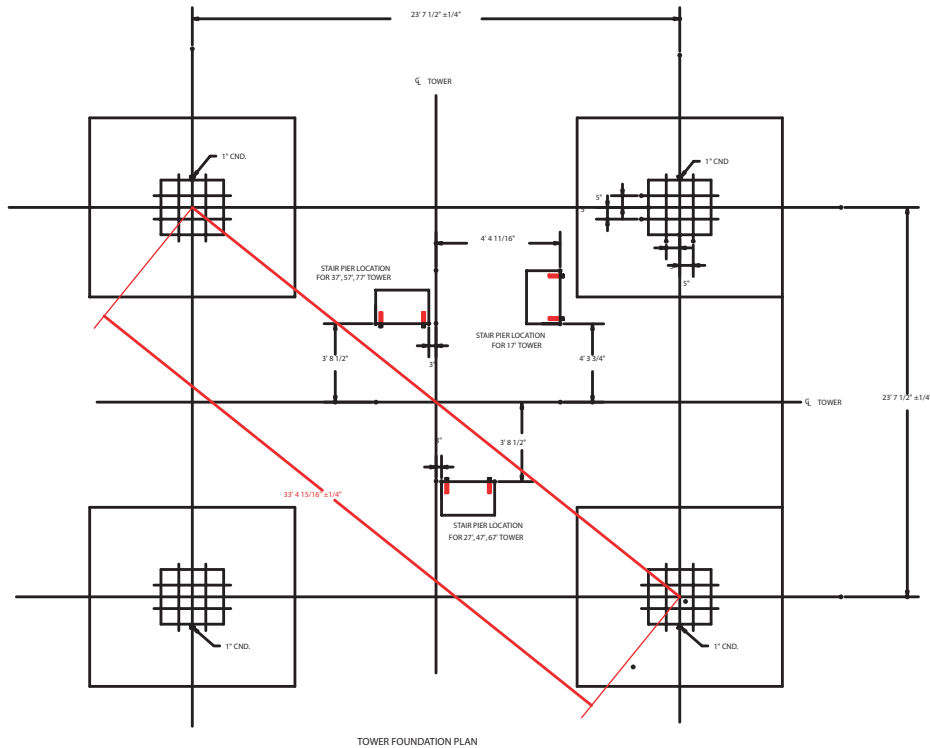
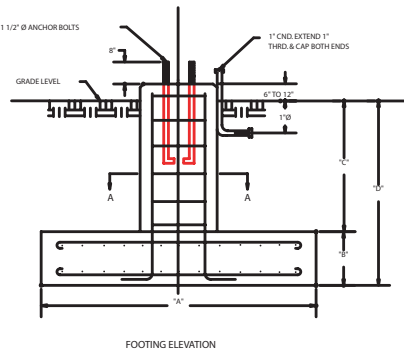


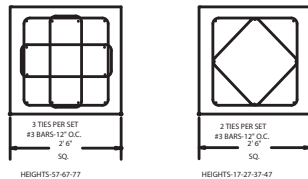
LET	REVISION	DATE	APP'D
A	ADDED TOL. TO ANCHORS	4/30/98	D.S.
	ELECTRONIC RESTORATION	7/22/98	T.S.



TOWER FOUNDATION PLAN



FOOTING ELEVATION

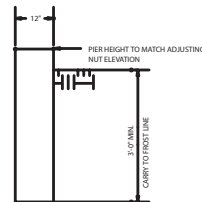
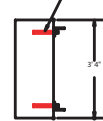


SECTION A-A

TOWER HEIGHT	DRY CONDITION				PAD		RE-BAR	
	A	B	C	D	RE-BAR	SPACING	PIER RE-BAR	
17'	8'-0"	1'-9"	1'-9"	5'-0"	10#4	11 1/4"		
27'	8'-6"	2'-0"	5'-0"	7'-0"	10#4	12"	(8) #5	
37'	9'-0"	2'-0"	6'-0"	8'-0"	10#4	11 1/4"	(8) #6	
47'	10'-0"	2'-0"	6'-6"	8'-0"	11#4	11 5/8"	(8) #8	
57'	12'-0"	2'-0"	6'-6"	8'-0"	11#4	11 1/2"	(12) #7	
67'	13'-0"	2'-0"	7'-0"	9'-0"	11#4	11 1/2"	(12) #8	
77'	14'-0"	2'-0"	7'-6"	9'-6"	11#4	11 1/2"	(12) #9	

# RE-BAR MATS BOTH WAYS-TOP & BOTTOM OF PAD.

3/4" EXPANSION ANCHOR BOLT W/ 5" EMBEDMENT LENGTH  
INSTALLED PER MANUFACTURER'S INSTRUCTIONS AFTER TOWER ERECTION.

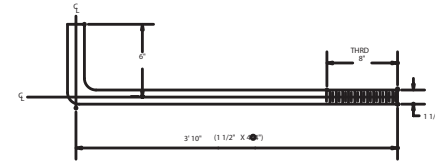


STAIR PIER

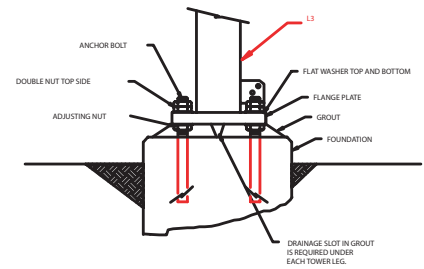
NOTES:

- FOOTING DESIGNED FOR AN UPLIFT SAFETY FACTOR OF 2. MAXIMUM BEARING PRESSURE BASED ON 4000 PSI. SOIL CONDITION.
- WORK SHALL BE IN ACCORDANCE WITH LOCAL CODES, SAFETY REGULATIONS, AND UNLESS OTHERWISE NOTED THE LATEST REVISION OF ACI 318, "BUILDING CODE REQUIREMENTS FOR REINFORCED CONCRETE".
- CONCRETE MATERIALS SHALL CONFORM TO THE APPROPRIATE STATE REQUIREMENTS FOR EXPOSED STRUCTURAL CONCRETE AND SHALL DEVELOPE A MINIMUM COMPRESSIVE STRENGTH OF 3,000 PSI IN 28 DAYS.
- PROPORTIONS OF CONCRETE MATERIALS SHALL BE SUITABLE FOR THE INSTALLATION METHOD UTILIZED AND SHALL RESULT IN DURABLE CONCRETE FOR RESISTANCE TO LOCAL ANTICIPATED AGGRESSIVE ACTIONS INCLUDING FREEZING AND THAWING.
- REINFORCEMENT SHALL BE DEFORMED AND CONFORM TO THE REQUIREMENTS OF ASTM A615 GRADE 60.
- CONCRETE COVER FROM TOP OF FOUNDATION TO ENDS OF VERTICAL REINFORCEMENT SHALL NOT EXCEED 3" NOR BE LESS THAN 2".
- EXPOSED EDGES OF CONCRETE SHALL BE CHAMFERED 3/4" X 3/4" MINIMUM.
- GROUT SHALL BE "EMBECCO" 713 GROUT (NON-SHRINK) OR APPROVED EQUIVALENT.
- TOPS OF FOUR TOWER PIERS SHALL BE LEVEL WITHIN 1/4". TOLERANCE ON ANCHOR BOLT GROUPS SHALL BE ±1/16" TOLERANCE BETWEEN ANCHOR BOLT GROUPS SHALL BE ±1/4".

M.



16 REQUIRED GALVANIZED ANCHOR BOLTS ASTM-A307  
(NOT SUPPLIED WITH TOWER)



DESIGNED BY D. VAN ARMAN	SWAGER COMMUNICATIONS INC. ANGOLA, INDIANA 46703	
DRAWN BY D. SWAGER	TITLE TOWER AB-1368/F FOUNDATION PLANS AND DETAILS	
CHECKED BY W. HOLCOMB P.E.	DATE 11/11/97	SCALE AS SHOWN
PROJECT NO. 98752	CODE IDENT. NO. D	DRAWING NO. 9029969
SHEET NTS		